

Party Time - 1

For questions 1-9, choose the best word or expression to fill in the blank(s).

1. The day after Sunday is - - - -.

- A) Saturday B) Monday C) Tuesday D) Thursday

2.



- A) use the computer
B) go to the cinema
C) look at the book
D) watch television

3. Tim - - - - to his birthday party.

- A) sees a doctor
B) plays football
C) invites his friends
D) goes to bed

4. Sarah : Can I leave the classroom?

Teacher : - - - -

Sarah : I feel bad.

- A) Why?
B) Really?
C) Of course.
D) You're welcome.

5. Timothy : When is your birthday?

Sam : - - - -.

- A) I have a party
B) It's on April 3
C) I need two candles
D) It's at 2 o'clock

6. Jane : - - - -?

Jack : No, but we must buy a cake and lots of drinks.

- A) Do we need a clown for your party
B) What do we need for the birthday party
C) Can I have my birthday party here
D) Can you buy a big chocolate cake

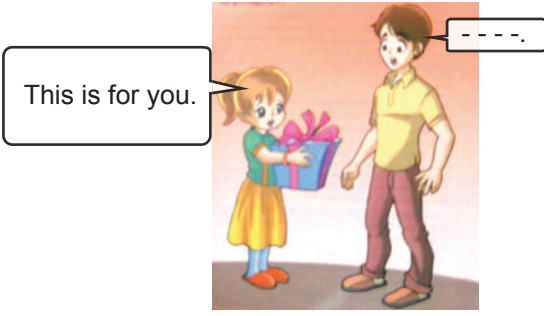
7. Amy : Let's go to the cinema.

Andrew : I'm sorry I can't. - - - -.

- A) I read a book every day
B) I can decorate the house
C) I must do my homework
D) I like football and tennis

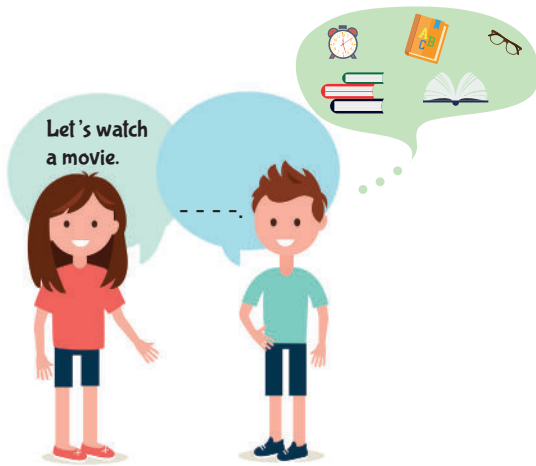
Party Time - 1

8.



- A) Thank you
- B) You are welcome
- C) See you tomorrow
- D) Nice to see you

9.



- A) I love sci-fi movies
- B) See you at the cinema
- C) I must do my homework
- D) Then, we can buy popcorn

10.



When is Anna's birthday party?

- A) On March 23
- B) Anna and her friends
- C) At a café
- D) Anna's mum

11.

	BIRTHDAY	NEEDS
CAROL	March	A cake Beverages
ASHLEY	August	A clown
MATT	September	Invitation cards
TOM	May	Balloons Candles

According to the table Matt's birthday is in the - - - - month of the year.

- A) 3rd
- B) 8th
- C) 9th
- D) 5th

12. Which of the following matchings is NOT correct?

A)



CANDLES

B)



CLOWN

C)



CAKE

D)



BALLOONS