



Environment - 4

1. I am Andy. I live in a big city. I love my city, but we have some problems. Most people in my city use their private cars even in the short distance. Some animal species lose their habitats because people cut down trees. Factories pour their wastes into the river. We must take action and do our best to protect the environment.

According to the given text, Andy does NOT talk about - - - .

- A) soil pollution B) water pollution
C) air pollution D) deforestation

2. I live in Atrani, a small town in Italy. The town has wonderful scenery, but we have some environmental problems here. Many people drive their work every day and because of the vehicles' exhaust fume, old people can't breathe easily. There are some factories that produce chemical materials. Many sea animals die because of them.

There is NO information about the - - - - the environmental problems.

- A) kinds of
B) effects of
C) solutions to
D) reasons for

3. **Teacher** : What must we do for our environment?

Bill : We must use solar energy.

Lucy : We must plant trees.

Lily : We must use fossil fuels as energy sources.

Eva : We must switch off the lights when we don't use them.

Whose answer is NOT correct?

- A) Bill's B) Lucy's
C) Lily's D) Eva's

4. There are mistakes in the table below.

Good for the environment	Bad for the environment
I. Using wind energy	a) Using plastic bags
II. Recycling paper, glass, and metals	b) Cutting down the trees
III. Using too many pesticides	c) Reducing water and energy waste
IV. Buying rechargeable batteries	d) Destroying rainforest

Which of the following should change place to correct the mistakes?

- A) I - d B) II - b C) III - c D) IV - a

5. In the lesson, the teacher is talking about environmental problems.

- It causes an increase in the Earth temperature.
- It is a worry about endangered species.
- These are poisonous chemicals used in agriculture.

Which of the following environmental problems does NOT the teacher talk about?

- A) Extinction of animals B) Air Pollution
C) Global warming D) Pesticides

6. **Teacher** : What must we do to protect our environment?

Luis : We shouldn't destroy rainforests.

Emma : We should use plastic bags.

Jesse : We should recycle paper and bottles.

Ivan : We shouldn't always use private cars.

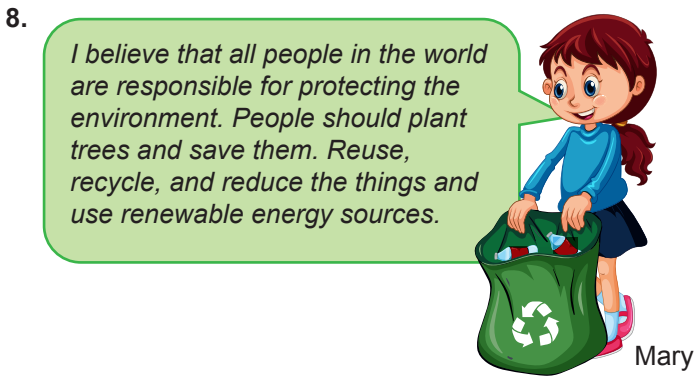
Whose suggestion is NOT suitable for the teacher's question?

- A) Luis' B) Emma's C) Jesse's D) Ivan's



The boy in the picture should - - - .

- A) keep clean the rivers and lakes
- B) use renewable energy sources
- C) switch off the lights
- D) use public transportation



Which of the following visuals does NOT match Mary's statement?

- A)
- B)
- C)
- D)

9. Pollution is a big problem in our world. We should be careful about using natural sources. We should prefer public transportation or bicycles to reduce air pollution. We shouldn't cut down trees or make a fire in the forests. We should always keep our environment clean.

The text is about the - - - pollution.

- A) reasons of
- B) kinds of
- C) results of
- D) precautions against

10. **WASTING ENERGY**

People use energy for many reasons such as cooking, lighting, heating, and transportation. Overusing energy sources causes climate change. It also causes higher energy costs. We should use renewable sources like water, wind, and solar energy to reduce these harmful effects. We shouldn't use fossil fuels as energy sources. We should choose energy-saving bulbs and devices. We mustn't set the thermostat too high. We mustn't wash our clothes in too hot water. We can ride to work or school. We must take necessary precautions to save energy sources.

According to the text, we should - - - to save energy.

- A) use fossil fuels as energy sources
- B) wash our clothes in hot water
- C) choose energy-saving bulbs
- D) set the thermostat too high

11.

I.	If we go on polluting the environment,	a.	we should use eco-friendly products.
II.	We should recycle waste materials	b.	to prevent the extinction of some species.
III.	If we want to keep our environment clean,	c.	we won't find a place to live.
IV.	We should take the necessary precautions	d.	to protect our environment.

Which of the following matchings is CORRECT?

	I.	II.	III.	IV.
A)	a	d	c	b
B)	c	b	a	d
C)	a	d	b	c
D)	c	d	a	b